

ASSAULT SERIES STAINLESS STEEL LED BOLLARDS



Assault bollards are designed specially for place to high security with stainless steel body and hydraulic operation system.

In addition to being perfect resistant to suicide attack it operates a long term.

Moving part can rise from 70 cm to 100 cm as standardly.

Tank series bollards are designed and produced as fully compliant for all kind of access control systems.

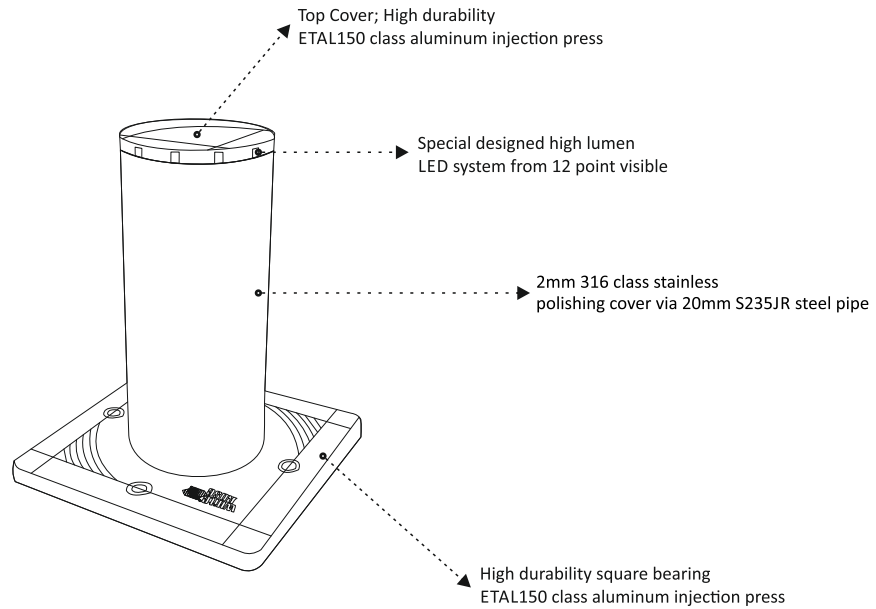
System main structure has built from S235JR quality steels, all hydraulic parts like unit, valves, locks are from BOSCH - Rexroth brand.

General Informations and Standards

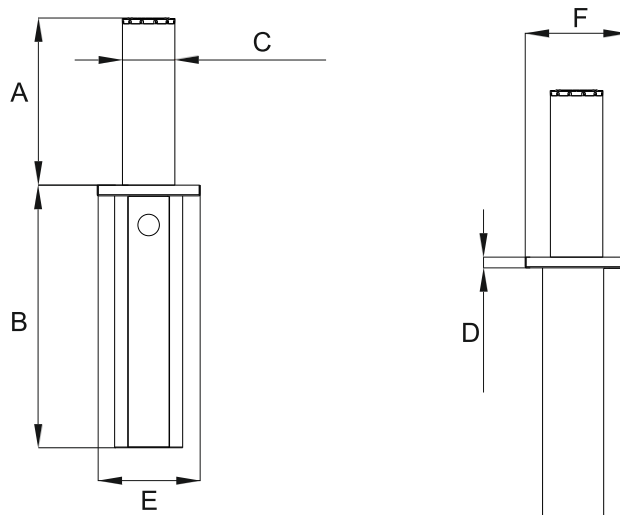
- ▶ PLC control panel
- ▶ Outer body is 316 quality stainless steel
- ▶ Operation speed is 4-6 second
- ▶ 3/8 R2 Hydraulic hoses 330 bar withstand
- ▶ 100% heavy duty cycle
- ▶ Fully compliant for access control systems
- ▶ Double contact loop detector
- ▶ Manual hand pump
- ▶ Wr200 desktop button system
- ▶ Lift capacity is 750 kg each
- ▶ High performance working
- ▶ Fully safe and reliable operation
- ▶ Remote control and receiver system
- ▶ LED system on top for day/night visible
- ▶ 2 years warranty



Product Details



Dimensions



	A / mm	B / mm	C / mm	D / mm	E / mm	F / mm
70 Opener	700	1100	220	45	430	430
80 Opener	800	1200				
90 Opener	900	1300				
100 Opener	1000	1400				



Technical Datasheet

Type	TANK PS SERIES					
Model	TPS-1	TPS-2	TPS-3	TPS-4	TPS-5	TPS-6
Rising Bollard Unit	Unary	Binary	Triad	Quad	Quinary	Senary
Movable Part	On 20mm ST37 Steel Pipe, 2mm 316 Quality Stainless					
Working System	Hydraulic					
Power Supply	380 V 3 Phases 50/60 Hz					
Control Card	12 in - 8 out PLC					
Current	2,2 A	4,4 A	6 A	8 A	11 A	
Motor Power	1,1 KW	2,2 KW	3 KW	4 KW	5,5 KW	
Opening Time	4-6 sec					
Duty Cycle	100%					
Lift power for each Bollard	628 Kg					
Limit Switch Type	Adjustable engine working period					
Working Pressure Min.	30 Bar					
Working Pressure Max.	50 Bar					
Manual Opening	Global Valve					
Manual Closing	Optional Manual Pump					
Hydraulic Oil Type	32 or 46 number hydraulic oil					
Bollard Color	Satin Stainless Steel					
Warning Light	Led system designed specially in upper hood					
Hydraulic Hose	3/8 R2 330 Bars					
Working Temperature	-20°C min +70°C max					
Bollard Weight	246 Kg	246 Kg x 2	246 Kg x 3	246 Kg x 4	246 Kg x 5	246 Kg x 6

Optional Extras

- ▶ Oil Heater
- ▶ Oil Cooler
- ▶ Emergency Fast Operation (1sec)
- ▶ DC Motor
- ▶ Battery
- ▶ Traffic Lights (red-green)
- ▶ Traffic Lights post
- ▶ PLC Control Screen

ADDRESS

Organize Sanayi Bölgesi
9. Cad. No. 1 KARAMAN, TR

T: 0 338 224 13 60

F: 0 338 224 14 46

M: whiterose@whiterose.com.tr

W: www.whiterose.com.tr